

Poor Battery Life

SC5

An investigation of abnormal battery drain reports has led to a change in the electrical system used on the SC5.

To maximize performance, the battery and Lower Control Board (LCB) have been enhanced.

Should you have a drained battery on an SC5 before serial number **155005DAY12340116**, you must replace the LCB and battery together.

Battery Components:

- Old Battery (Fig.1) **PN: 14123**
- New Battery (Fig.2) **PN: 055-0209**

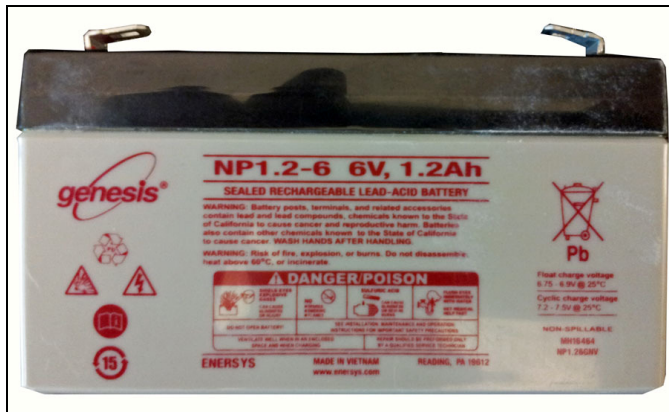


Fig. 1



Fig. 2

Lower Control Board

- Old LCB (Fig. 3) **PN: 13092**
- New LCB (Fig . 4) **PN: 055-0210**

NOTE: To determine the version of the LCB, locate the green sticker on the LCB (Fig. 5).
The old version of the LCB is labeled “**PCK1N**”. The new version of LCB is labeled “**PCN1N**”.

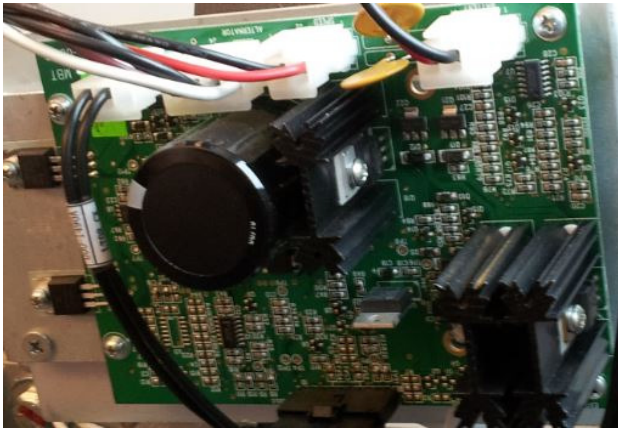


Fig. 3

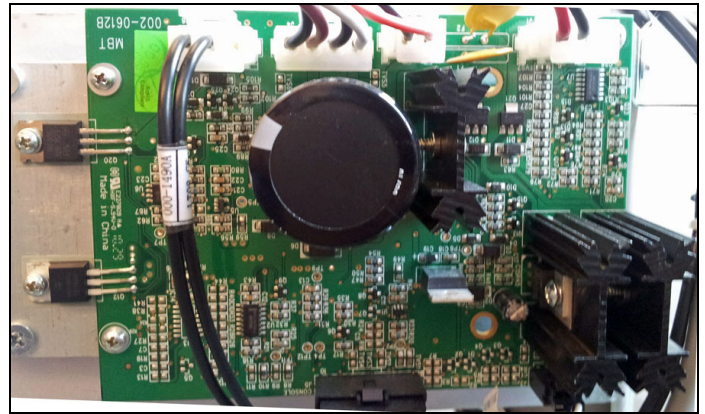


Fig. 4



Fig. 5